

Net Spy Pro User Guide-

<http://www.NetSpyPro.biz>



Below is the user guide for **Net Spy Pro**.
Network Monitoring Software Documentation
Version: 4.0 Platform: Windows 95/98/ME/2000/2003/NT/XP/Vista
© 2002-2008 Retina-X Studios. All rights reserved.

PLEASE NOTE: This is only the online version of the user guide. For more detailed information about usage please see the internal NSP Help File which is launched when you install NSP.

Installing Net Spy Pro

To install Net Spy Pro, first copy the installer program to a shared folder.

How do I create a shared folder?

Create a folder on your desktop, such as NSP40. Now right click on it and choose properties. Then click on the sharing tab. Next, click the option box "Share this folder on the network". Then click Apply. For more info check the Windows Help. Now a shortcut is created in your Network Neighborhood to this folder.

Then go to all individual workstations and browse to the shared folder and run the installer.

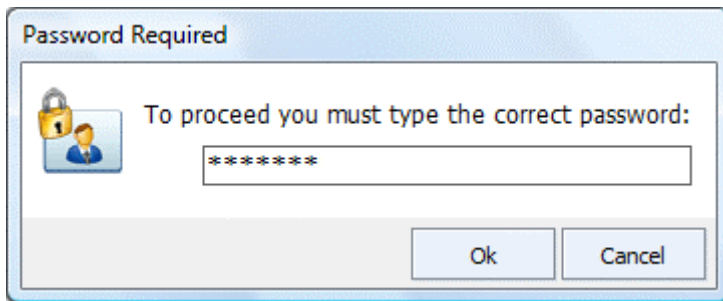


It is recommended that you change the password from the default one on each machine.

You should also install the setup on your workstation. You can leave monitoring turned off. But you need to be able to access the Admin Control Panel on your workstation so you can connect to other PC's and use NSP's features.

Getting Started

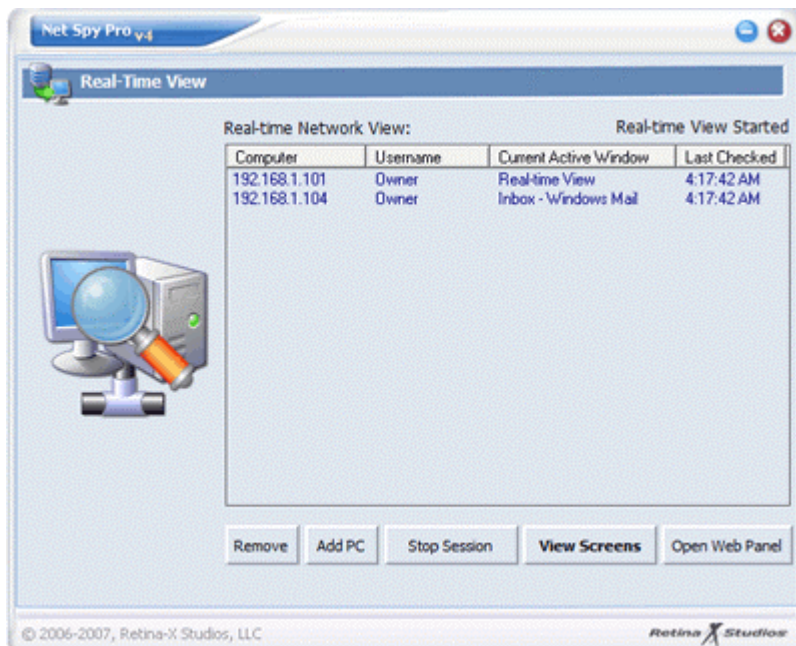
After you have installed NSP to each machine you want to monitor, you can access the Admin Control Panel on any individual PC by executing <drive>:\Program Files\NetServer\nspconfig.exe application. This will bring up the password box as shown below.



Then type the default password "retinax" without quotes. Now you are inside the NSP Admin Control Panel for the PC you are sitting at. You can set different options and customize NSP to your needs as explained in the Adjusting Settings section of this help file. You will use this same control panel at your workstation to remotely monitor the client machines. It is recommended that you change the password from the default one on each machine.

How to connect to a PC to view logs or perform commands

To view logs or use the NSP web interface on a machine from your workstation, you must first connect to the machine. Use the View Logs screen to organize this easy task. Click "Add", then select a PC from the drop down list. After your list is complete, select a PC by clicking its "Network Users" entry. Then click "View Activities". Your browser window will open to that machine's login screen. Enter the password and you will be connected to the Web Based Interface where you can perform a wide range of monitoring and admin tasks.



How the connection process works if you have a large or dynamic IP network

In most instances you can entirely use the View Logs screen to connect to workstations. But if you have a large network or a network that assigns dynamic IP addresses, you will do things a little

differently. You will need to scan your IP range each time you view logs using the Network Scan. This is so you can find the latest addresses for the workstations.

Other ways to connect to a machine

Although you can connect to a PC through View Logs or Network Scan screens, you can also access PC's manually. Simply type the IP address of a client machine (on which NSP server is running) in your browser's address bar such as <http://192.168.1.101> to access the web interface for the associated client. This feature can be turned off in Advanced settings by applying an IP Filter.

Also note, additional features can be found in a separate viewer called the Real Time Viewer. This viewer can show you the current process or the actual screens of a specific group of machines.

How to adjust settings for a workstation

To adjust settings for a particular workstation, you should run the Admin Control Panel on that workstation. You can do this at the workstation or by using the Control PC feature of NSP to connect to the workstation remotely and do it from your own PC. But be aware that when you use the Control PC feature, the user can see what you are doing if they are there. So make sure the user is not at the workstation if you do it remotely.

Note: Some settings require you to restart the monitoring process by clicking "Stop" then "Start" again before the new changes will take effect.

Using Full Remote Control Feature

To use the remote control feature built into NSP, bring up the NSP control panel on your workstation. Then click CONTROL PC. Then select which PC you want to connect to and which mode you would like. It will then connect to the remote PC.

Net Spy Pro: How does it work?

Net Spy Pro is like a web server which runs on each client PC. Web servers allow you to view the web pages stored on them. The web server is listening by default on the port number 80. When you type the web page address (for example: www.xyz.com/abc.html) it is converted to the IP address of the web server (for example: 243.98.101.19) and your browser searches for this IP address. Once it is found it sends the page request (i.e. abc.html) to the server. The server in return sends the page to the browser. And hence the page abc.html is displayed inside your browser.

Net Spy Pro functions exactly the same. The NSP program acts like a web server listening by default on port number 80. When you send a request to it through your browser, it extracts out what action you are seeking and then performs that action and hence returns the result again to your browser. All the pages are generated dynamically upon request. You can customize which port NSP is listening to.

All-in-all Net Spy Pro is a revolutionary idea to give you the best results.

Web Interface

After you have connected to a PC you can then use the various commands and live monitoring tasks included with Net Spy Pro. Each command is outlined below.

TOP COMMANDS

System Information

Shows you specific information about the PC you are connected to. Shows vital data such as system and Windows information.

View Remote Desktop

Here you can view an actual screenshot of the connected workstation instantly in a new window. This is used to check-up on a user to see if they are working or playing.

Logout of Net Spy Pro

Logs you out of the current PC so that you can either close the window or connect to another PC in the same window.

Stop Net Spy Pro Server

Closes the Net Spy Pro server on the connected PC. Useful if you don't want the server to run on a specific PC anymore until that PC is rebooted.

LIVE MONITORING COMMANDS

Remote Desktop

Here you can view an actual screenshot of the connected workstation instantly in a new window. This is used to check-up on a user to see if they are working or playing.

Active Processes

Shows you a list of processes currently running on the connected PC. Clicking a process terminates that process.

System Information

Shows you specific information about the PC you are connected to. Shows vital data such as system and Windows information.

File System

Here you can navigate the file system of the remote PC. You can delete, execute on the remote pc, or download any file from the remote PC.

Registry Startup Keys

Here you will find a list of keys in the Windows Registry Startup sequence. You can also delete any key by clicking on it.

View Browser Favorites

Here you can view a list of the favorites on the user's Internet Explorer Browser. This shows the full list and includes any categories that the user may have created.

View Temporary Histories

Here you can view a list of temporary history (cache) of the Internet Explorer browser. This allows you to check up on employee's past activity even before you purchased NSP.

View Open Ports

Here you can view all open ports on a workstation. This is useful for making sure that there are no outbound Internet connections other than authorized connections.

View Recent Documents

Here you can view a list of recent documents opened by the user. Shows all types of files such as Excel, Word, Notepad, etc.

View Password Cache

Here you can view a file that lists the passwords in memory on any user's workstation. This is useful for catching employees trying to login to other employee's accounts.

SYSTEM CONTROL COMMANDS

Lock PC

This command locks down the connected PC from being used. To unlock, click "System Unlock".

Unlock PC

This command unlocks the "System Lockdown" command and makes the computer usable again.

Freeze Mouse

This command freezes the mouse on the connected PC. The mouse will not move when this command is on. To regain mouse use click "Unfreeze Mouse".

Unfreeze Mouse

This command unfreezes the "Freeze Mouse" command and makes the mouse function normally again.

Restart PC

This command restarts the remote PC. Click it and the user will then be prompted with a restart window.

Shutdown PC

This command shuts down the remote PC. Click it and the user will then be prompted with a shut down window.

Logoff PC

This command logs the current Windows user off of the remote PC. Click it and the user will then be prompted with a logout screen.

Display Message

This allows you to enter a short text message into the interface that will then be instantly displayed on the remote PC's screen. The message will stay up for ten seconds or until the user clicks "OK".

Launch URL

This allows you to launch any URL on the remote PC. If Internet Explorer isn't already open, NSP will open it and launch the given URL.

Launch Application

This allows you to launch any application or file with an association on the remote PC. If the program isn't already open, NSP will open it and launch the given file. Use the "File System" command to navigate and find files.

Run Screensaver

This command instantly runs the selected screensaver on the remote PC.

Hide Taskbar

This command instantly hides the taskbar on the remote PC. To show the taskbar click "Show Taskbar" command.

Show Taskbar

This command returns the taskbar to its normal state.

Show Desktop Icons

This command hides all open windows so that the desktop is visible.

Hide Desktop Icons

This command opens any available window to hide the desktop.

Empty Recycle Bin

This allows you to empty the recycle bin of the remote PC. Click it and the user will be prompted with a confirmation.

LOGGED MONITORING COMMANDS

Web Sites Log

Here you can view the list of web sites viewed in Internet Explorer by date. First select a date and then scroll down to the content below the date section. Each date will show you a list of sites visited that day along with the time visited.

Chat Transcripts Log

Here you can view any chat transcripts recorded for a selected date.

Screenshots Log

Here you can view the screenshot files by date. First select a date and then scroll down to the content below the date section. Each date will show you a list of windows that were captured. Click a window to view its screenshot in a new window.

Keystrokes Log

Here you can navigate recorded keystroke logs by date. First select a date and then scroll down to the content below the date section. Each new window has an entry for text typed into that window.

Applications Log

Here you can view the list of applications or files launched by date. First select a date and then scroll down to the content below the date section. Each date will show you a list of files and applications visited that day along with the time visited.

Documents Log

Here you can view any documents accessed for a selected date.

Net Spy Pro Log

Here you can view a listing of all NSP activity that has occurred since installation.

Configure Logging

Here you can specify which monitoring and administration functions will be active

on the remote PC.